



## MATERIALITY - EXTERIOR

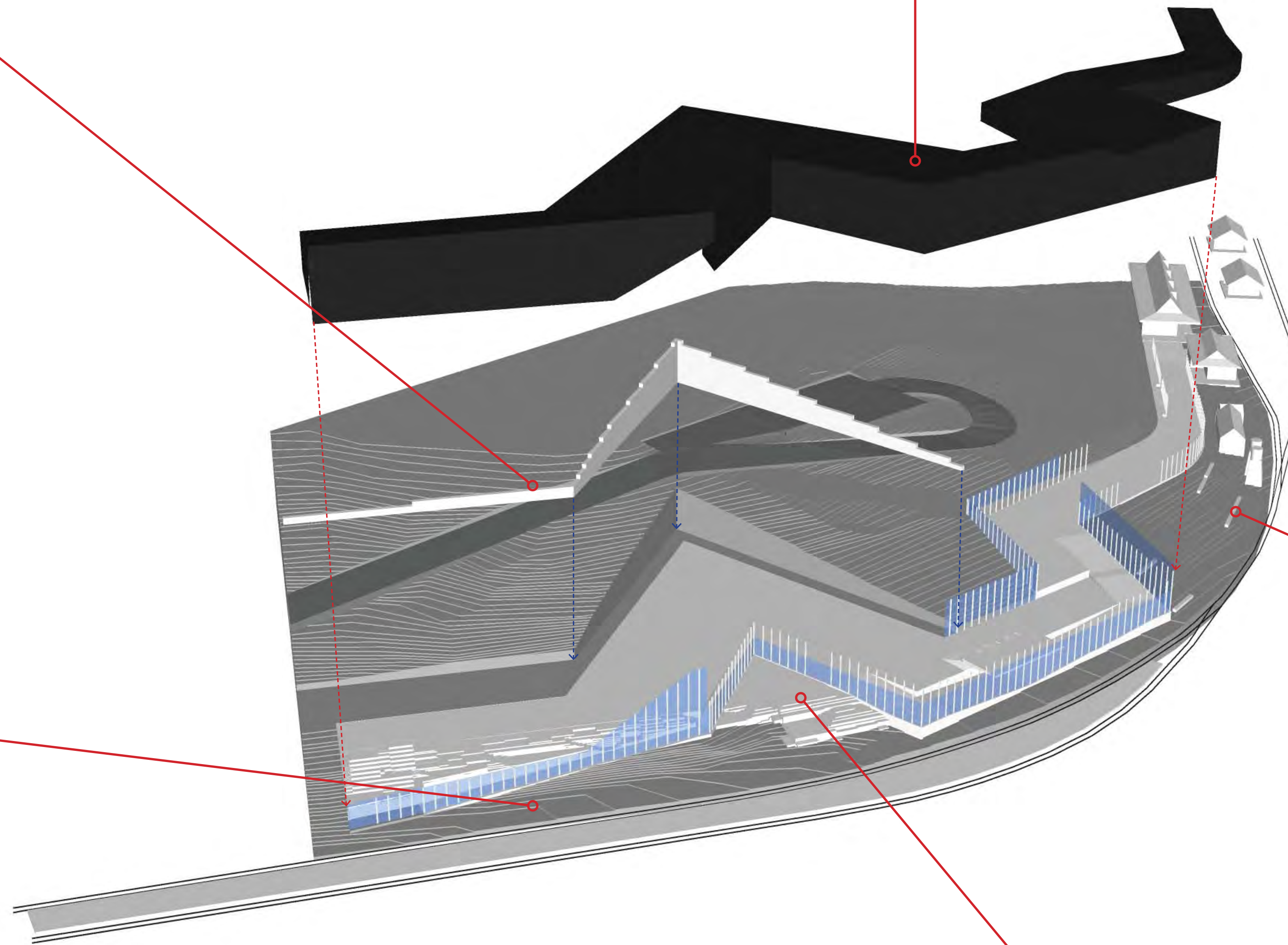
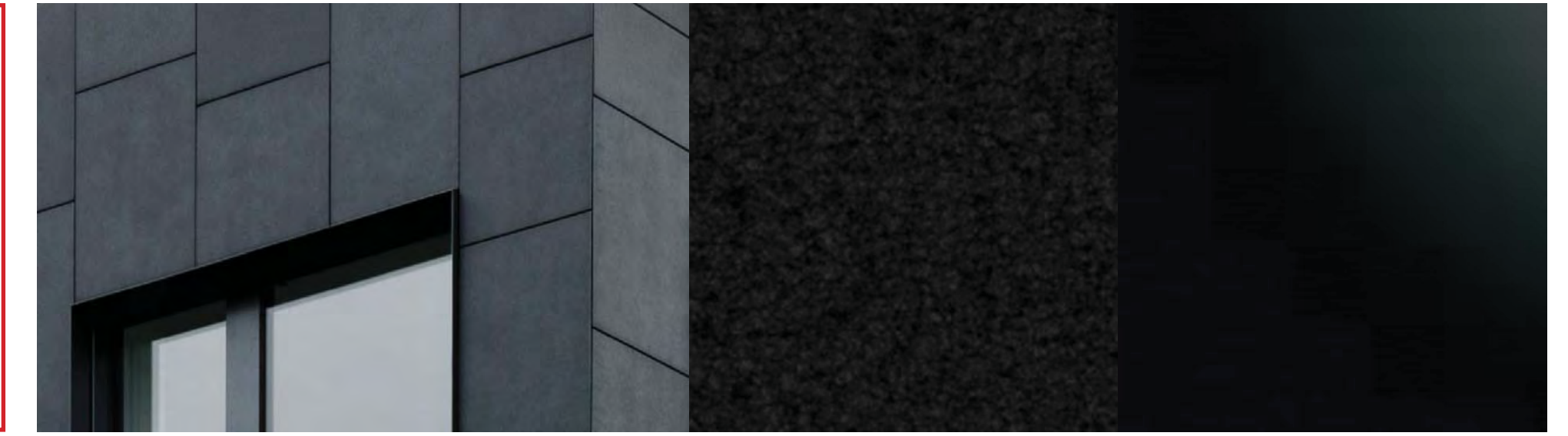
Externally, the Lakeside Discovery Centre is black and shiny like the engines that are the signature of the railway and recedes in the shadows of the bush. The new Lakeside Discovery Centre is a silhouette backdrop - grounded in place - to the hero that is the Puffing Billy Railway experience.



Blue metal filled gabion walls are proposed for areas where soil retention is required. Gabions provide a textural quality and material familiarity that will blend with the railway setting



Externally, the Lakeside Discovery Centre cladding will be a simple black material palette, reminiscent of the engines that are the signature of the railway. The building will recede into the shadows of the bush. The Lakeside Discovery Centre becomes a silhouette backdrop to the hero that is the Puffing Billy Railway experience.

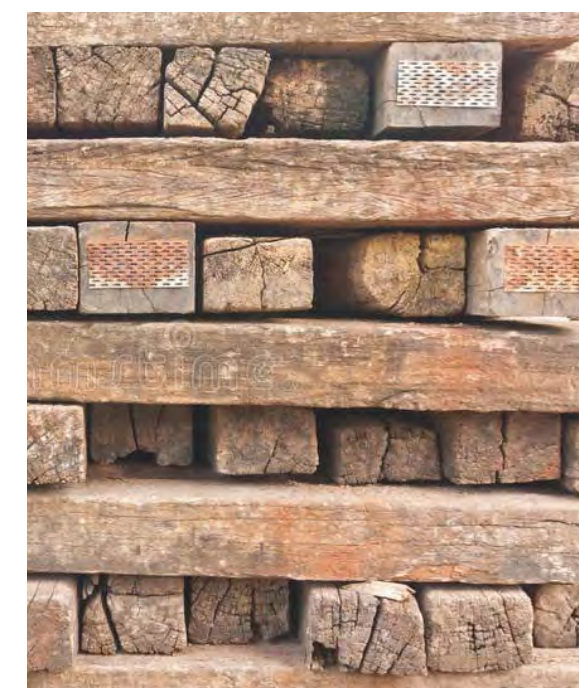


*'The notion of the building as a linear plinth, with black steel roof lined in timber providing volume over the platform, is a compelling image and this was considered a significant strength in the original winning competition concept . We support the black external surface of the building which sits well into its landscape and also appropriately captures a materiality that is related to the railway narrative. The transparent glazed frontage of the building, opening up onto the timber-ceilinged platform volume provides both an effective counterpoint to the dull black exterior, and an opportunity for delight as a vista to the building and wider setting is opened up as the train rounds the corner.'* – Office of the Victorian Government Architect

Graded paving treatment to transition between the external platform height and the internal ground level



Solid timber elements are proposed as public seating between the Discovery Centre and the railway line on the walkway to Emerald Lake. This key junction between the Puffing Billy Railway and the greater Emerald Lake Park should be celebrated as a communal gathering place for everybody to enjoy



The use of railway sleepers or similar sized timbers are proposed for the alfresco dining area. Timber had been selected as a transitional component between the internal floor level and the external platform height, creating an interesting varied terrain for external dining

