

GENERAL NOTES

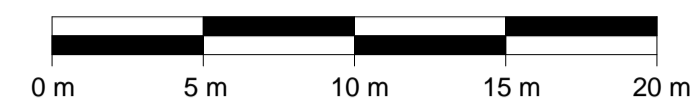
DO NOT SCALE FROM THIS DRAWING

CONFIRM ALL DIMENSIONS AND SETOUTS ON SITE PRIOR TO MANUFACTURE & INSTALLATION

ALL WORK IN ACCORDANCE WITH RELEVANT AUSTRALIAN STANDARDS

TO BE READ IN CONJUNCTION WITH ENGINEERS DOCUMENTS.

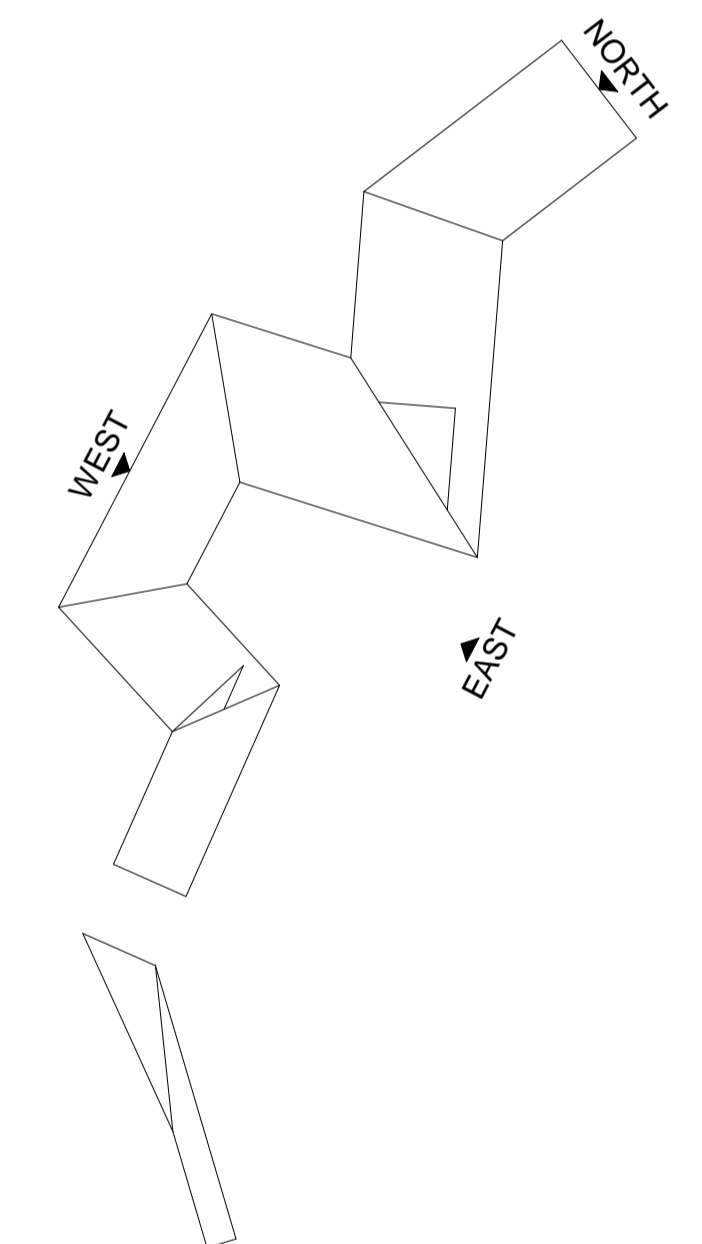
LEGEND



LEGEND

Refer to SCH-01 and SCH-02 for full descriptions and specification of all elements.

CODE	DESCRIPTION
CD1	Metal wall cladding
GZ1	Aluminium framed glazing
GZ2	Aluminium framed glazing, heavy tint
PC1	Precast concrete panels
ST1	Structural steel, exposed
TM1	Feature timber soffit



Rev	Date	Description
F	28/09/2018	100% DD ISSUE
E	14/09/2018	75% DD ISSUE
D	17/08/2018	50% DD ISSUE
C	06/08/2018	BOH REALIGNMENT
B	13/07/2018	DRAFT TOWN PLANNING

sydney Level 2, 79 Myrtle St
Chippendale 2008
Nominated Architect: Gerard Reinmuth 6629
T 02 9698 2198
F 02 9698 2353
hobart 181 Elizabeth St
Hobart 7000
Nominated Architect: Scott Balmforth 564
T 03 6234 6372
F 03 6231 4839

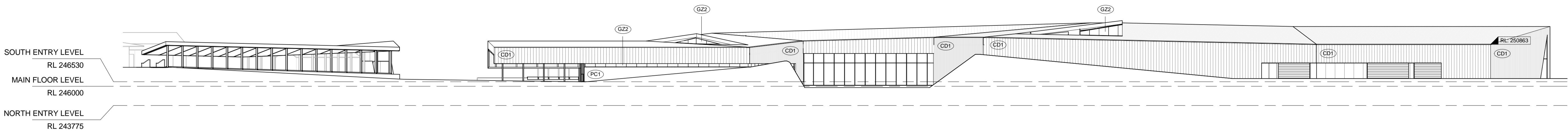
TERROIR

Project:
EMERALD TOURIST RAILWAY BOARD LAKESIDE DISCOVERY CENTRE
Drawing Description:
BUILDING ELEVATIONS

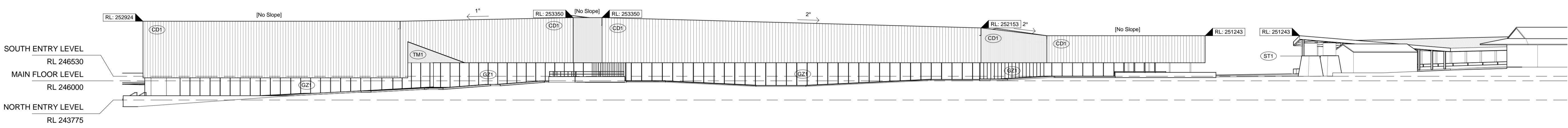
Drawn by: MC Checked by: ES Scale: 1 : 250@A1

PROJECT NO:	DWG NO:	REV NO:
18302	DD-50-01	F

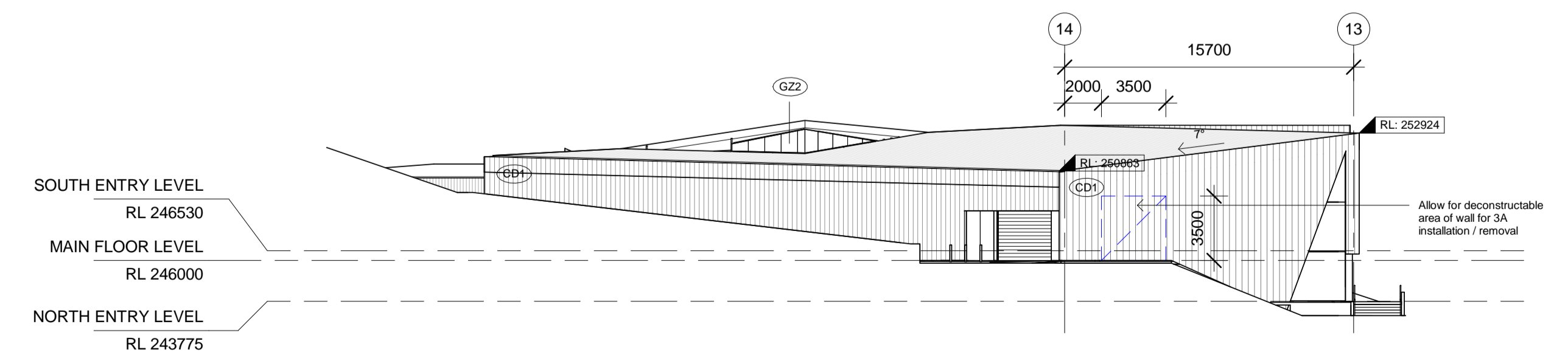
Drawing Status: 100% DD ISSUE



1 EAST ELEVATION
1 : 250



2 WEST ELEVATION
1 : 250



3 NORTH ELEVATION
1 : 250