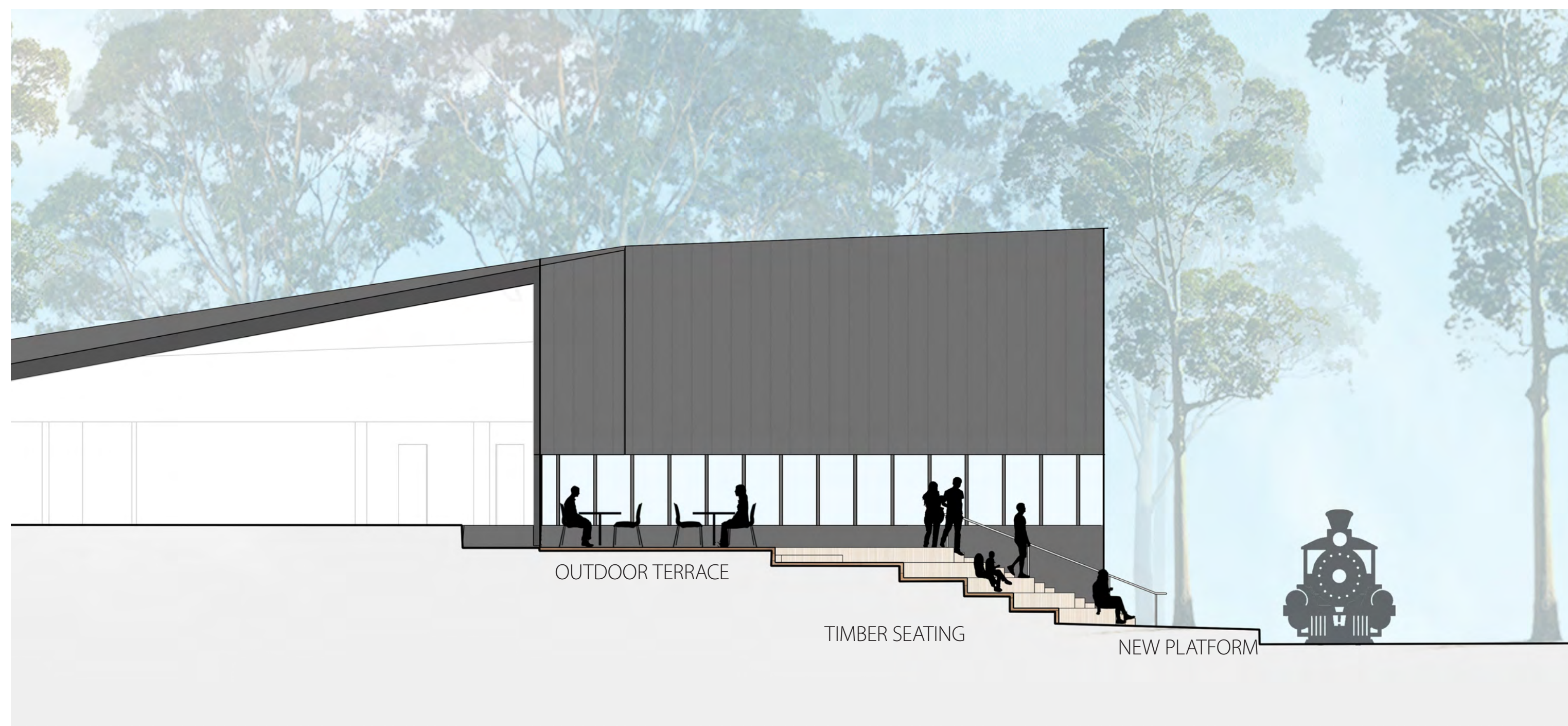




SECTION A



SECTION B

PLANTING CONCEPT



TEMPERATE AUSTRALIAN FERN GARDEN



RE-VEGETATION OF EXISTING SPECIES

MASTER PLAN DESIGN PRINCIPLES

The Master Plan design was shaped by a series of broad design principles that support the quality of visitor experience and the overall sustainability of the Puffing Billy Railway. These principles apply to the whole of the Puffing Billy network including the Lakeside Station setting.

Authenticity

The visitor experience must always be intimate and personal with a strong connection to individual places.

Puffing Billy rail stations are a functional part of each hill township and should always retain that relationship. Stations should retain a small and authentic scale and not be seen or developed as exclusive tourism 'enclaves'.

Volunteer Interaction

The PBR volunteers who operate and maintain the trains, and welcome and entertain visitors are central to the Puffing Billy visitor experience. Their role must be carefully managed to maximise the benefit of this unique human resource.

Connection to Place

The connections between the stations and townships are important to the quality of the visitor experience.

Puffing Billy Railway has the potential to serve as a centre piece of a wider system of recreational cycling and walking networks which collectively contribute to the idea of the Dandenong Ranges being a multi layered, all seasons leisure destination.

Wayfinding, Interpretations & Communications

Site design concepts must be supported by an overall strategy for wayfinding, interpretations and communications that delivers a consistent, legible and recognisable identity and communications strategy across the entire length of the Puffing Billy Railway.

Community

The PBR plays a significant role in the economy of the Dandenong Ranges communities and creates special opportunities for volunteer groups and for those who use PBR as a focus for a wider range of community building activities. PBR must facilitate these interactions, not function in isolation to the communities that it passes through.

Environment

PBR provides unique visual access to the environment and cultural landscapes of the Dandenong Ranges. Experience of the railway and experience of the environment are inextricably linked and mutually dependent. The Master Plan must act as a catalyst for integrated planning, landscape and environmental management.

Unified Planning Controls

Development pressures adjacent to the rail corridor have the potential to negatively impact the scenic experience for Puffing Billy visitors. Yarra Ranges Shire Council and Cardinia Shire Council should collaborate to ensure that the rail corridor is protected from inappropriate change.

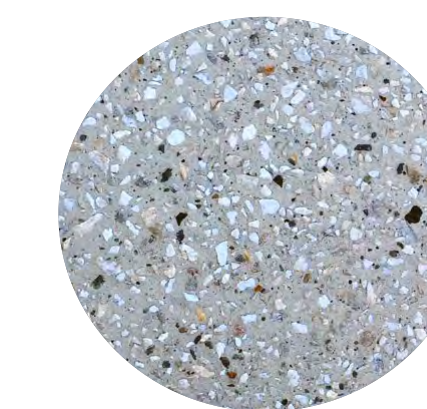
MATERIALS PALETTE



ASPHALT



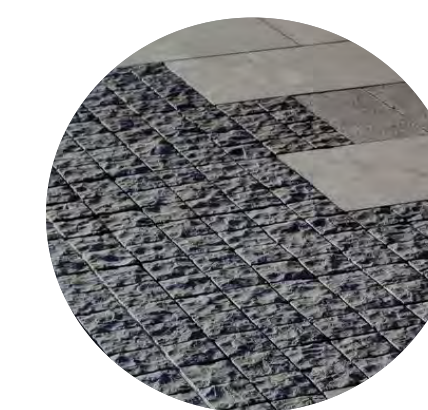
STONE EDGING



EXPOSED AGGREGATE CONCRETE



STACKED ROCK WALL



FEATURE STONE PAVING



TERRACED TIMBER SEATING

PLANTING PALETTE



INDIGENOUS TREES



LUSH COOL CLIMATE GULLIES



NATIVE GRASSES

